

# MONTHLY MEMBERSHIP PROGRESS REPORT

LOCATION OHIO

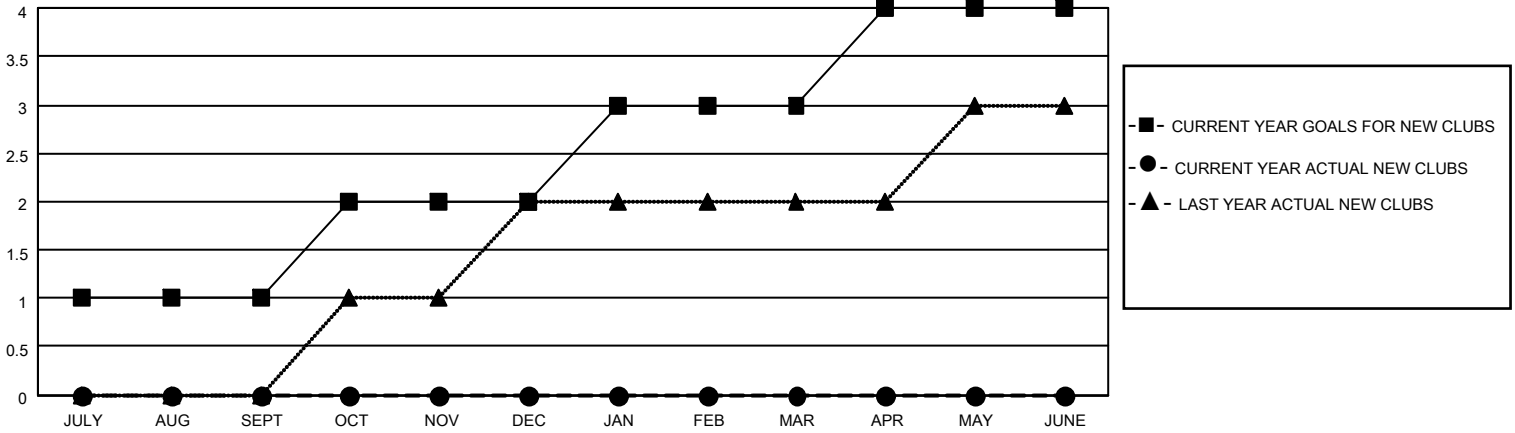
District 13 OH2

Results as of: 1/31/2022

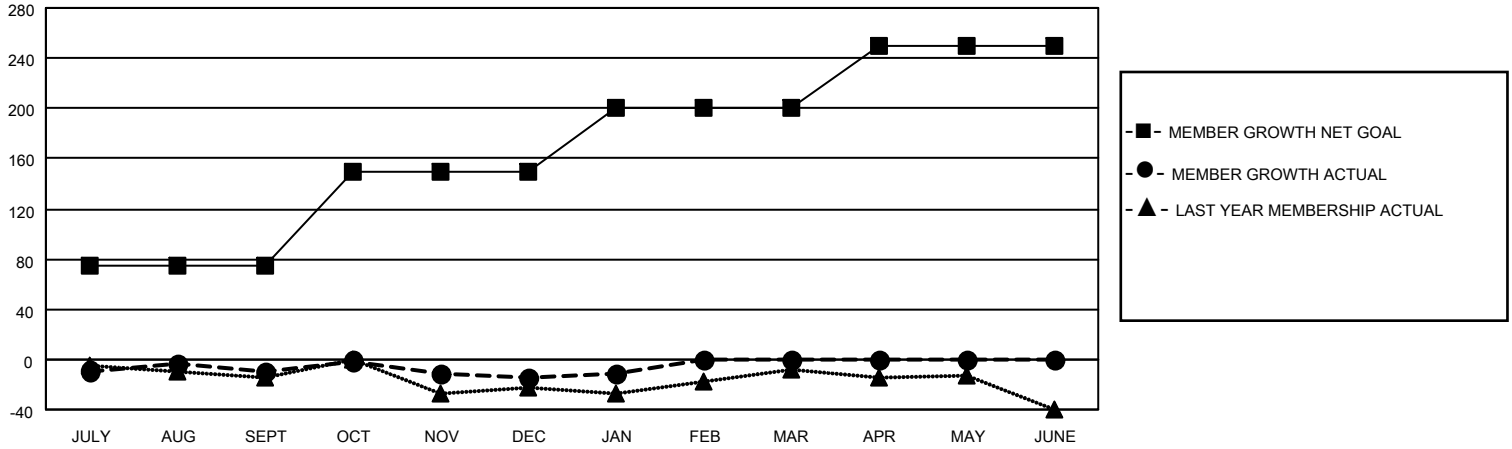
Clubs			
RESULTS FOR 2021-2022			
QUARTER	NEW CLUB GOAL	NEW CLUBS	DROPPED CLUBS
JULY/AUG/SEPT	1	0	2
OCT/NOV/DEC	1	0	0
JAN/FEB/MAR	1	0	0
APR/MAY/JUNE	1	0	0

Members			
RESULTS FOR 2021-2022			
QUARTER	MEMBER GROWTH NET GOAL	MEMBER GROWTH ACTUAL	DROPPED MEMBERS ACTUAL (including transfers)
JULY/AUG/SEPT	75	29	37
OCT/NOV/DEC	75	47	49
JAN/FEB/MAR	50	9	6
APR/MAY/JUNE	50	0	0

**GOALS AND ACTUAL NEW CLUBS CUMULATIVE**



**GOALS AND ACTUAL MEMBERS CUMULATIVE**



**DROPPED CLUBS: 2**

**28 CLUBS OF 57 ADDED 1 OR MORE NEW MEMBERS**

**GENDER DISTRIBUTION**

MALE	1,212 (70.30%)
FEMALE	511 (29.64%)
NON BINARY	0 (0.00%)
PREFER NOT TO ANSWER	1 (0.06%)

**DROPPED MEMBERS**

[CLICK HERE FOR CUMULATIVE MEMBERSHIP DATA](#)

DECEASED	20
CLUB CANCELLED	0
OTHER	72
<b>TOTAL</b>	<b>92</b>

TOTAL FAMILY UNIT MEMBERS	382
FAMILY MEMBERS PAYING HALF DUES	195